

# The Vicksburg



Craftsman Exterior



Classic Exterior



Smart Style Exterior



Farmhouse Exterior

More exteriors and details at [WayneHomes.com](http://WayneHomes.com)



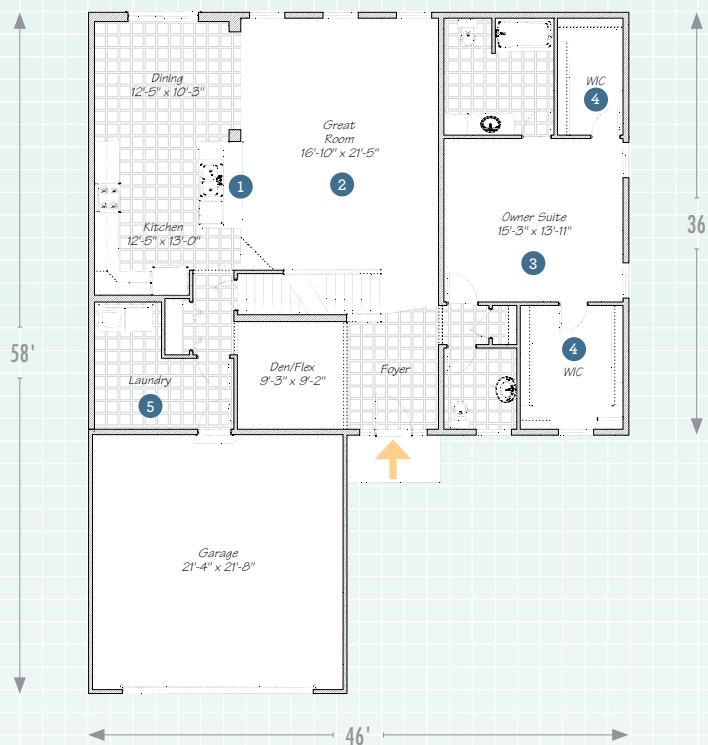
**WAYNE HOMES®**  
— EST. 1973 —

2,601 Sq Ft • 4 Bedroom • 2½ Bath • Two-Story

# The Vicksburg

2,601 Sq Ft • 4 Bedroom • 2½ Bath • Two-Story

## 1<sup>ST</sup> FLOOR



1 The kitchen features an island with eat ledge that flows into the great room.

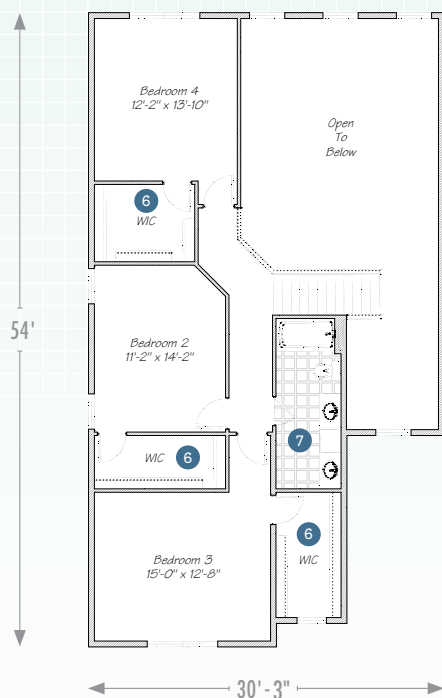
2 The heart of the home is the two-story great room.

3 The main-floor owner suite is like a wing unto itself, just for you.

4 His and hers walk-in closets make both him and her happy.

5 The mudroom is also the laundry room, in case "mudroom" is taken literally.

## 2<sup>ND</sup> FLOOR



6 Every bedroom deserves its own walk-in closet.

7 A double vanity helps busy families get their day started.



© Wayne Homes, LLC. This plan, drawing and brochure is the sole and exclusive property of Wayne Homes; it is subject to US Copyright law and registered with the US Copyright Office. It may not be reproduced or copied without the written permission of Wayne Homes. Room dimensions may vary. Prices, availability, and specifications may change without notice.



**WAYNE HOMES**  
EST. 1973

EEPTU 0209\_0723