

# The Hudson



Classic Exterior



Tradition Exterior



Craftsman Exterior



Farmhouse Exterior

More details at [WayneHomes.com](http://WayneHomes.com)

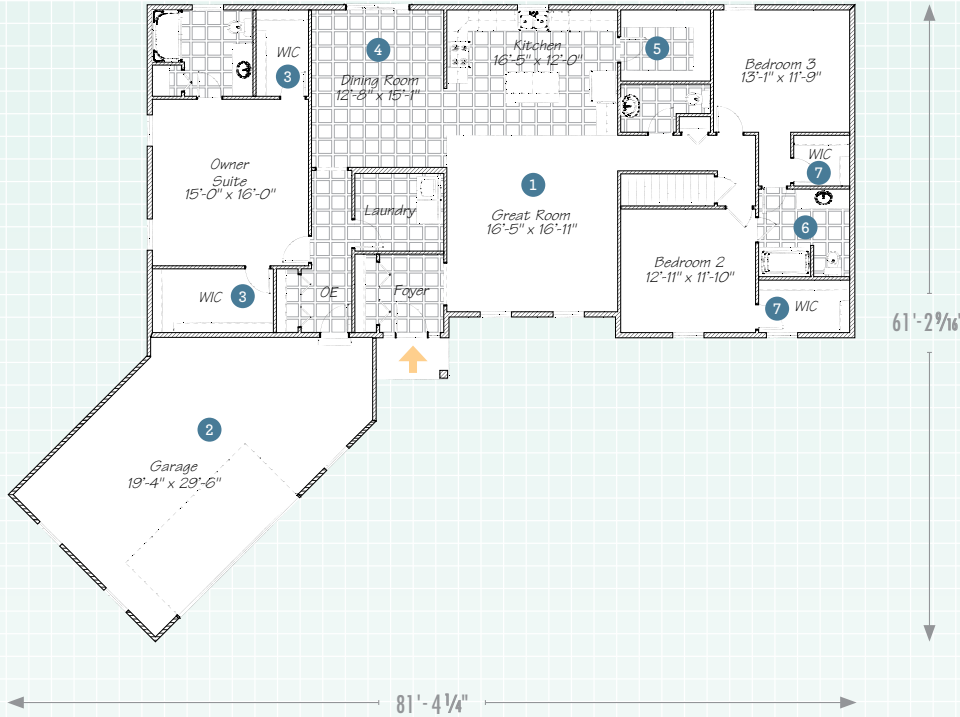
**WAYNE HOMES**<sup>®</sup>  
— EST. 1973 —

2,115 Sq Ft • 3 Bedroom • 2.5 Bath • Ranch

# The Hudson

2,115 Sq Ft • 3 Bedroom • 2.5 Bath • Ranch

## 1<sup>ST</sup> FLOOR



1 The great room is perfectly positioned, front and center.

2 Putting the garage at a 45-degree angle adds visual interest.

3 His and hers walk-in closets are the secret to domestic bliss.

4 We're bringing back the formal dining room.

5 A well-organized home starts with a big walk-in pantry.

6 A Jack-and-Jill bathroom, even if the kids aren't named Jack and Jill.

7 You get a walk-in closet and you get a walk-in closet and ...



© Wayne Homes, LLC. This plan, drawing and brochure is the sole and exclusive property of Wayne Homes; it is subject to US Copyright law and registered with the US Copyright Office. It may not be reproduced or copied without the written permission of Wayne Homes. Room dimensions may vary. Prices, availability, and specifications may change without notice.

**WAYNE HOMES**  
EST. 1973

EEPTU 0138\_0421