

# The Kinston II



Farmhouse Exterior



Classic Exterior



Craftsman Exterior



Homestead Exterior

More exteriors and details at [WayneHomes.com](http://WayneHomes.com)



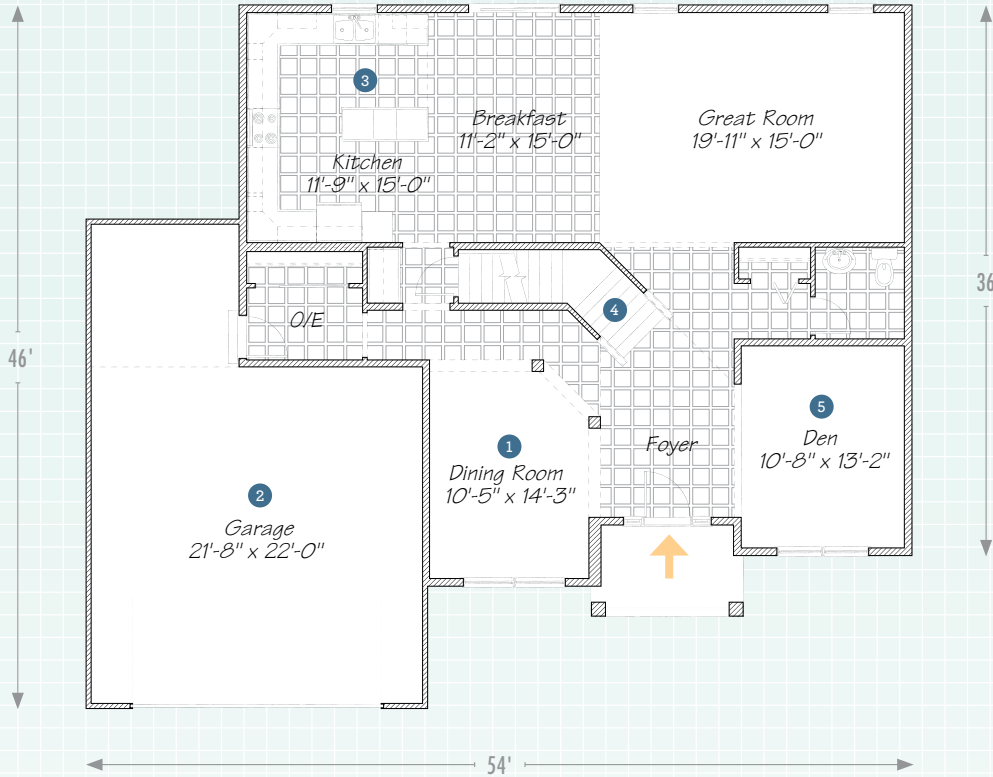
**WAYNE HOMES®**  
— EST. 1973 —

2,726 Sq Ft • 3 Bedroom • 2½ Bath • Two-Story

# The Kinston II

2,726 Sq Ft • 3 Bedroom • 2½ Bath • Two-Story

## 1<sup>ST</sup> FLOOR



1 A formal dining room makes any occasion feel special.

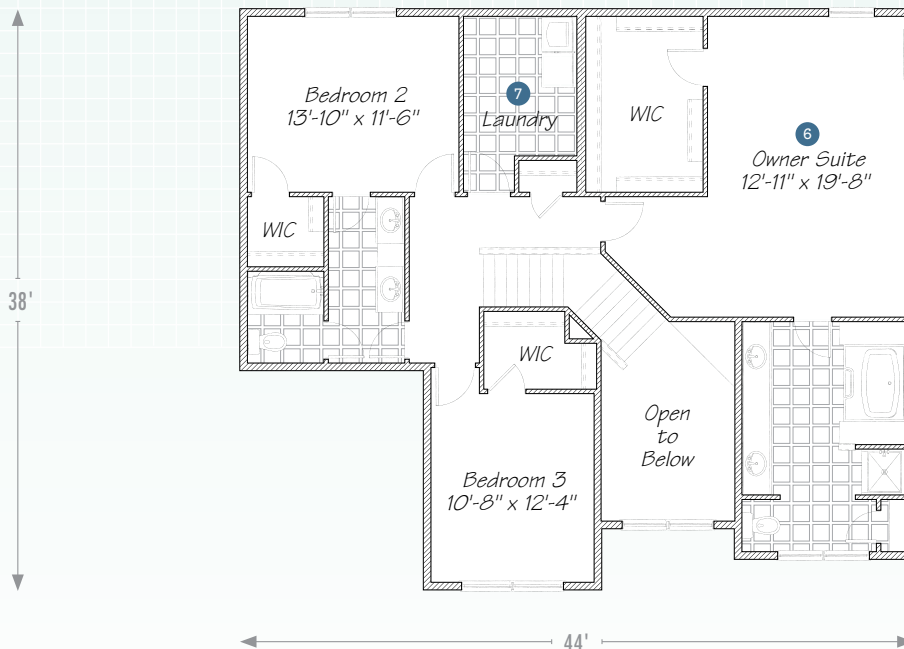
2 The two-car garage has room for a workbench or extra storage, and the overhead space can be optioned as a bonus room.

3 When the party moves to the kitchen, this one has enough room to make it a great affair.

4 The angled staircase creates a sense of openness and arrival in the two-story foyer.

5 With more people working from home these days a den/office is a must.

## 2<sup>ND</sup> FLOOR



6 The owner suite has a huge walk-in closet. In fact, all the bedrooms have walk-in closets.

7 The only thing more convenient than a huge walk-in closet is a laundry room right next door.



© Wayne Homes, LLC. This plan, drawing and brochure is the sole and exclusive property of Wayne Homes; it is subject to US Copyright law and registered with the US Copyright Office. It may not be reproduced or copied without the written permission of Wayne Homes. Room dimensions may vary. Prices, availability, and specifications may change without notice.



WAYNE HOMES<sup>®</sup>  
EST. 1973

EEPTU 0132\_0823